

GÖTESSONS



2023-05-15

Casa Uno

FROM: GÖTESSONS

Design: o4i



Specifications

Exterior:

The round corners makes the appearance smaller and easier to place anywhere in the room.

Frameless glass door for maximum light admission and transparency

The low clearance under the floor will make it less likely that anything get trapped underneath.

Doorhinge is high quality and is 2D adjustable

Easy moving wheels and adjustable feet that lifts the booth until the wheel is not touching the floor.

The booth is available in black and oak laminate or textile which is uncommon.

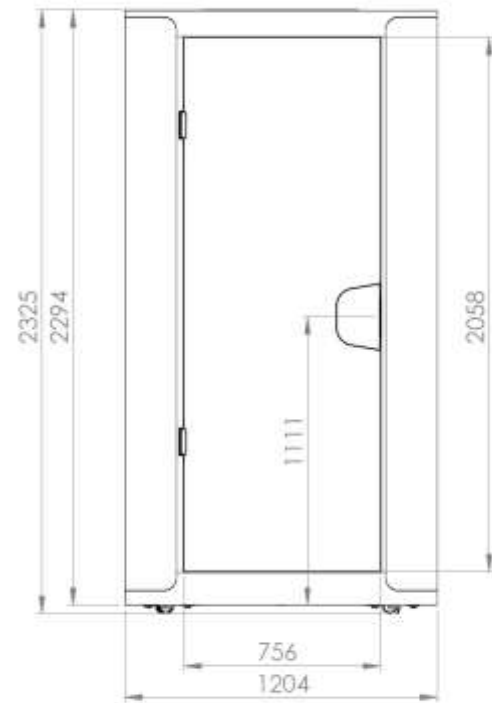
Dimesions:

Witdh: 1204x1204mm

Height: 2325mm

Door width: 756mm

Door Height: 2058mm



Specifications

Interior:

The round corners inside the Casa Uno make the inside bigger and spacious.

Shape of tabletop makes the entrance wide and gives easy access to the power outlets. The tabletop is in black nanolaminate, so no fingerprints.

Walls covered in felt, same as Cobogo. This gives a comfortable absorption level inside the pod.

High-end magnetic closing mechanism of the door that gives a premium sensation.

Stool as an option that fits perfectly under the table if the user wants to stand.

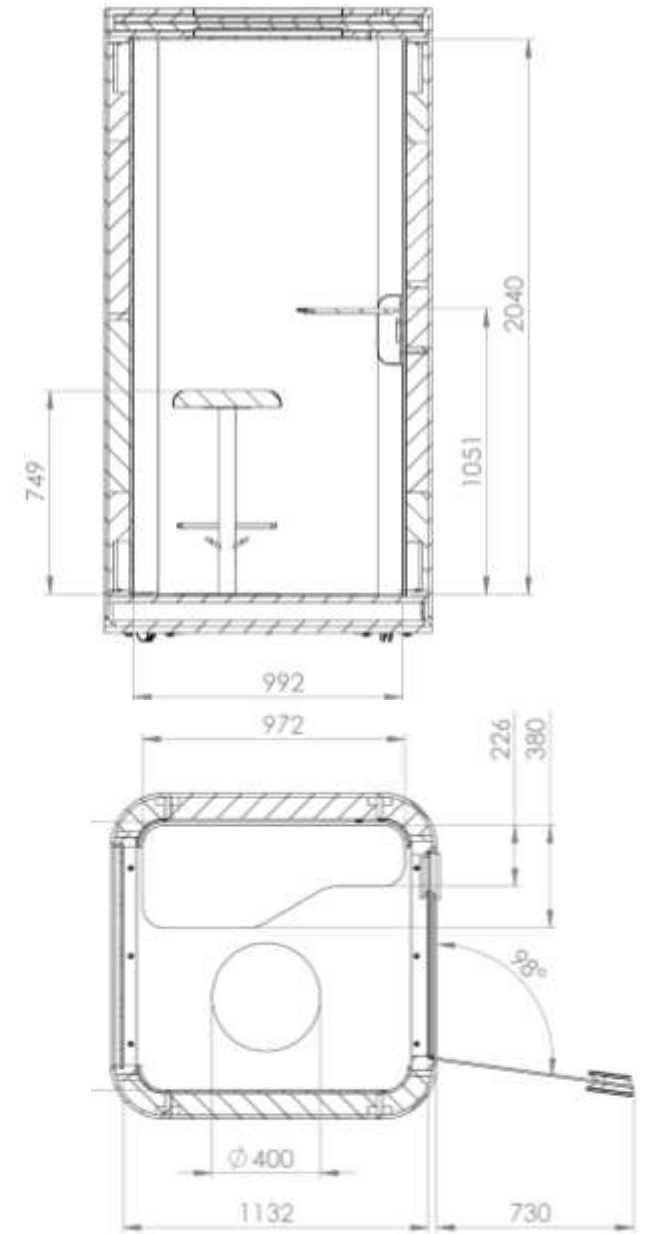
Internal dimensions:

Width: 990x990mm

Height: 2040mm

Table high: 1050

Stool high: 750

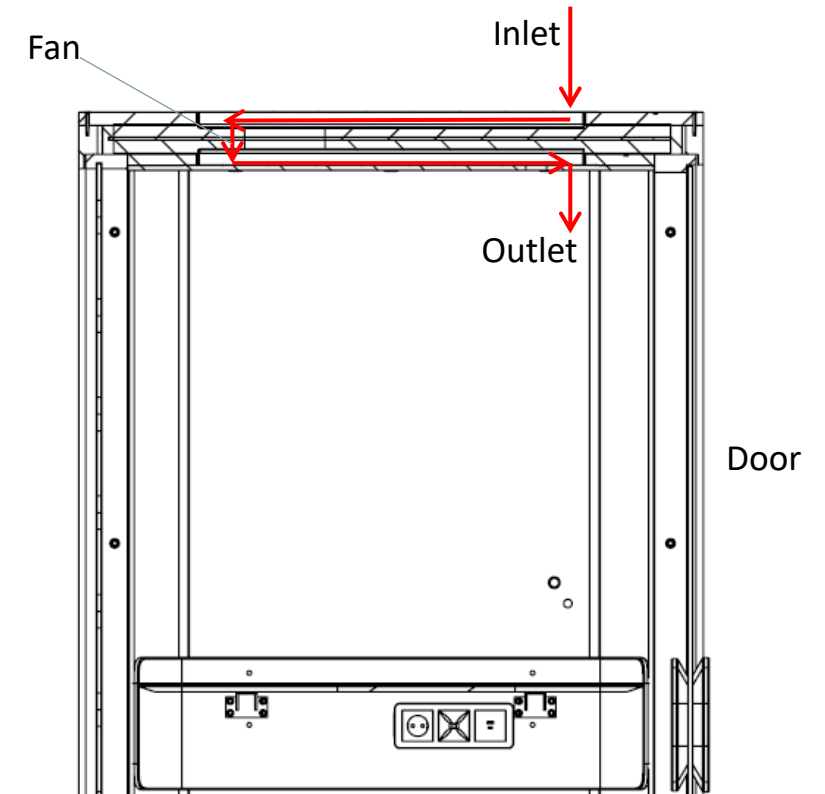


Ventilation Specifications

The ventilation is run by a fan in the roof.
The airflow is like the picture to the right,
This is to have as little sound as possible to
follow the ventilation.

The preset settings of the ventilation is:

When entered – 50% capacity,
3 minutes after leaving – 100%
10minutes after leaving – 10%



Electricity Specifications

The Casa Uno is available in all the European powersocket standards.

The booth has charging possibilities through power socket, USB-A and USB-C 45W.

The costumer can choose to supply the pod with power through the top of the roof or under the floor. The only thing the costumer needs to do is to flip the switch in the wiring box to the direction where they will connect the booth.



Light Specifications

The Casa Uno comes with five spotlights, three over the table and two on the opposite side. This spreads out the light smoothly.

There is a dimmer-button placed right above the table, that you press and hold to dim the light.



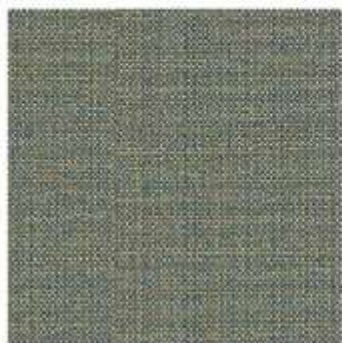
Assembly

The Casa Uno is easy and fast to assemble, it comes in six main parts.
It can be assembled by two persons under an hour. This will be very competitive.

We will of course have an assembly-instruction and also a assembly-video

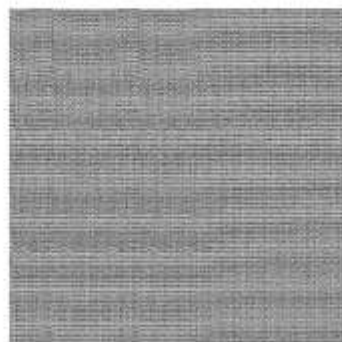


TEXTILE OUTSIDE

Textile Carlow by Camira

Colour 220
(Convoy CLW09)

"WARM EDITION" *



Colour 223
(Tallow CLW01)



Colour 224
(Callan CLW05)



Colour 228
(Quin CLW04)



Colour 229
(Redcross CLW08)

TEXTILE INSIDE

Textile Felt

Colour: -8 Ivory

LAMINATE



Oak laminate
(Honey Costello oak
K358 PW)

TEXTILE OUTSIDE

Textile Carlow by Camira

"COOL EDITION" *



Colour 221
(Cavan CLW15)



Colour 222
(Parteen CLW23)



Colour 225
(Carrick CLW18)



Colour 226
(Avoca CLW22)



Colour 227
(Emly CLW21)

TEXTILE INSIDE

Textile Felt

LAMINATE



Colour:-1 Gravel



(Charcoal Arvadonna
Chestnut
K534 AD)

Certifications

Casa Uno will have the necessary certifications for the European market.

More info regarding this will come when the tests are done.



Order information

How to order

We have article for **freight cost** that needs to be placed in the order.

If the costumer wants to add the stool, this is a separate article that needs to be added to the order

Production and delivery

Our production has a capacity of producing 1 POD/day.

Delivery time from 1/1 and during January and February will be 5-6 Weeks, after this delivery time will be 4 weeks.

All orders placed now will be delivered end of December



Prices

Article	EUR
Casa - upholstered	11 164 €
Casa – Oak/Black	10 526 €
Stool	531 €
Freigh cost	531 €



Thanks for listening!

Name Namesson

Email

Phone number



Instagram



LinkedIn



Facebook

GÖTESSONS